

## CUSTOMER BENEFITS

- ✓ **Cost-effective project realisation** through streamlined planning and monitoring of overall delivery time by manufacturer
- ✓ **Economical & standardised extension capabilities** through modular technology
- ✓ **High manufacturing quality** ensured by qualified personal and standardised processes along the value chain
- ✓ **Experts with** over 30 years experience with power houses
- ✓ **Variable use** of power houses for possible relocations
- ✓ **Improved carbon footprint** compared to classic concrete stations
- ✓ **Complete assembly and functional testing** of the system components at manufacturer's factory
- ✓ **Plug & Play** delivery of ready-to-connect functional units as turnkey solution

## FEAG TECHNOLOGY

- ✓ **Variable concepts and strategies**, leading to cost-efficient solutions - fast and reliable. One of these solutions is the modular power house, which we manufacture for you according to your individual requirements.
- ✓ **FEAG power houses** are used all over the world.
- ✓ **Our power houses** are accommodating low- and medium voltage switchgears, converters, control and automation systems and almost everything you can imagine...
- ✓ **Standardisation** Optimisation of module sizes
- ✓ **Certified** a.o. CSC and EN1090-2:2018



## KEY INFORMATION

**Scope:** Electrical engineering – with focus on renewable energy

**Locations:** St. Ingbert, Bremen, Komárno (SK), Forchheim

**Since:** 1946

**Employees '22:** ~400

**Sales '22:** ~53 Mio. €



## MISSION

As internationally renowned expert in electrical engineering we set sustainable standards for our industry and initiate innovation in collaboration.

## PRODUCT CATEGORIES

### Turnkey Station Solution

Turnkey Station Solutions (e.g. Compact Transformer Stations) for the renewable energy sector, as well as Power Houses.

### Switchgears

Installations that distribute high electrical power at different voltage levels to the place of use (e.g. industrial and construction sites).

### Smart Technology

We can equip each system with automation-, safety- or communication technology (including power quality solutions).

### Mechanical & Special Products

We produce a wide range of weather- and vandalism resistant housings for electrical engineering, as well as special products (e.g. train control cabin).

### Services

In addition to services like installations, we offer network measurement and installation training.

## YOUR PERFECT PLUG & PLAY SOLUTION



With the installation of complete electrical systems into POWER HOUSES, FEAG offers a variety of factory-tested solutions in a ready-to-operate system including air conditioning and the suitable housing - complete & prepared for the connection of field cables at site. The installation effort for the user is significantly reduced, the assembly time is shortened and the planning and scheduling risk is minimised.

Ready-to-connect functional units with electrical components for low- and medium voltage systems, control and protection technology, converter or line filter systems as well as transformers including complementing systems such as air conditioning and fire alarm systems.

- ✓ **Fast commissioning on site**  
by pre-commissioning at the factory
- ✓ **Adjustable**  
to a wide range of climatic conditions
- ✓ **Mobile**  
due to modular design

# ADVANTAGES & DETAILS OF POWER HOUSES

## VARIANTS

### SMALL POWER HOUSE

Plenty of equipment in the smallest space. Can be combined to form a container cluster, optionally with swap bridge.

**Weight:** up to 10 t

**Dimensions:** < 8 m/< 3 m/< 3,3 m  
length/width/height



### ISO POWER HOUSE

Can be combined to form a container cluster, cost-efficient transport due to proven ISO construction.

**Weight:** up to 25 t (with CSC-approval)

**Dimensions:** 20-40 ft/2.438 mm/3.238 mm  
length/width/height



### XL POWER HOUSE

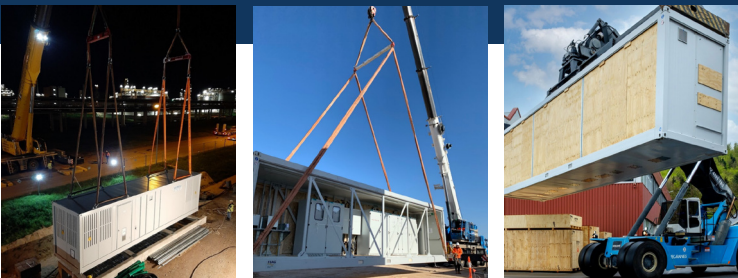
Offers sufficient space even for large projects. Can be combined to form a container cluster, double floor 300 mm (higher double floors can also be realised).

**Weight:** bis 55 t (40 t in Montagehalle)

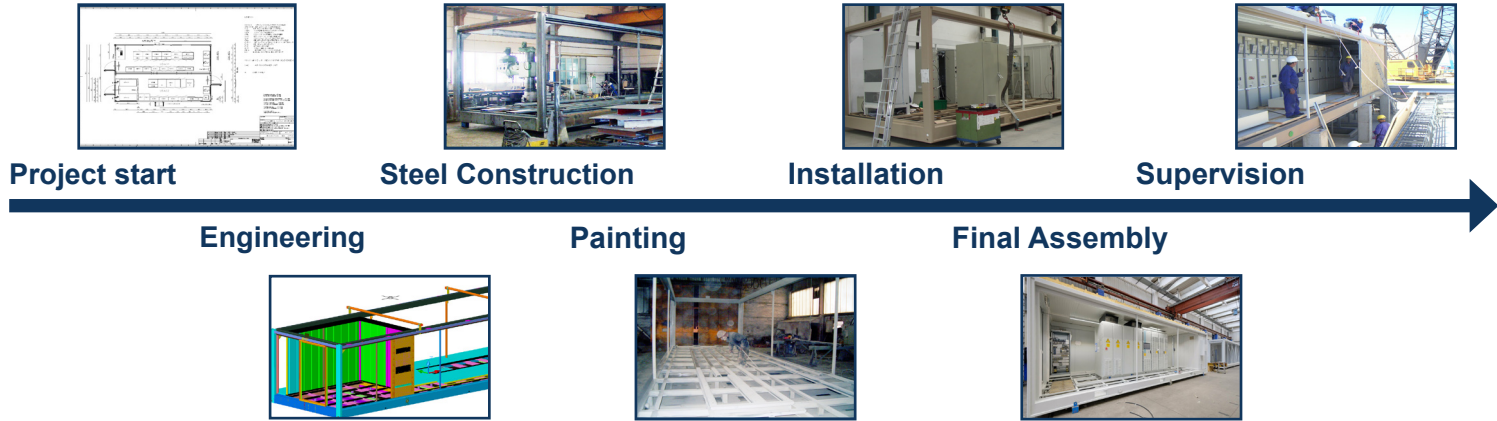
**Dimensions:** < 17 m/< 5 m/< 4 m  
length/width/height



## LIFTING OF ISO POWER HOUSES



# PROJECT PROGRESS



## OUR SOLUTIONS



SINCE  
**1984**

MORE THAN 3.600 POWER HOUSES

**2023**

